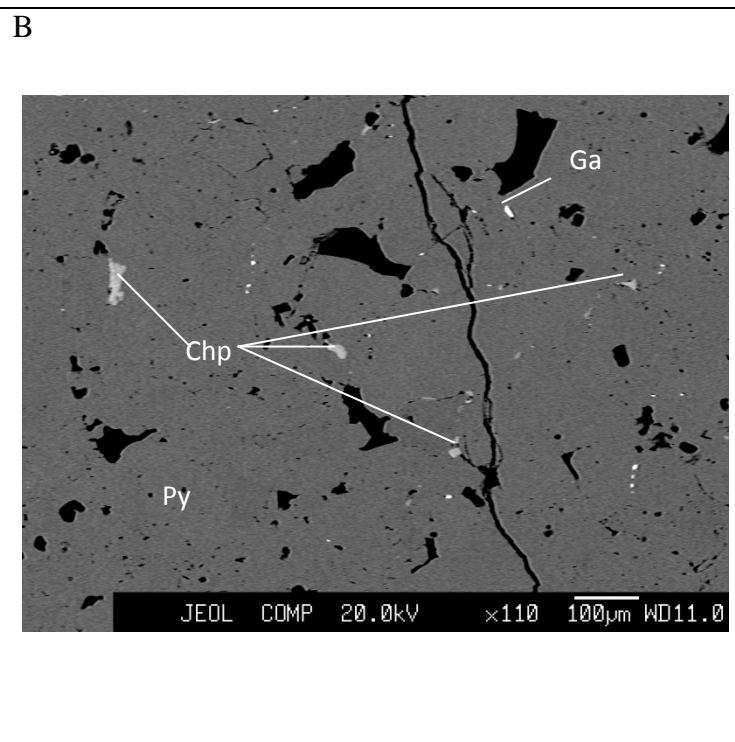
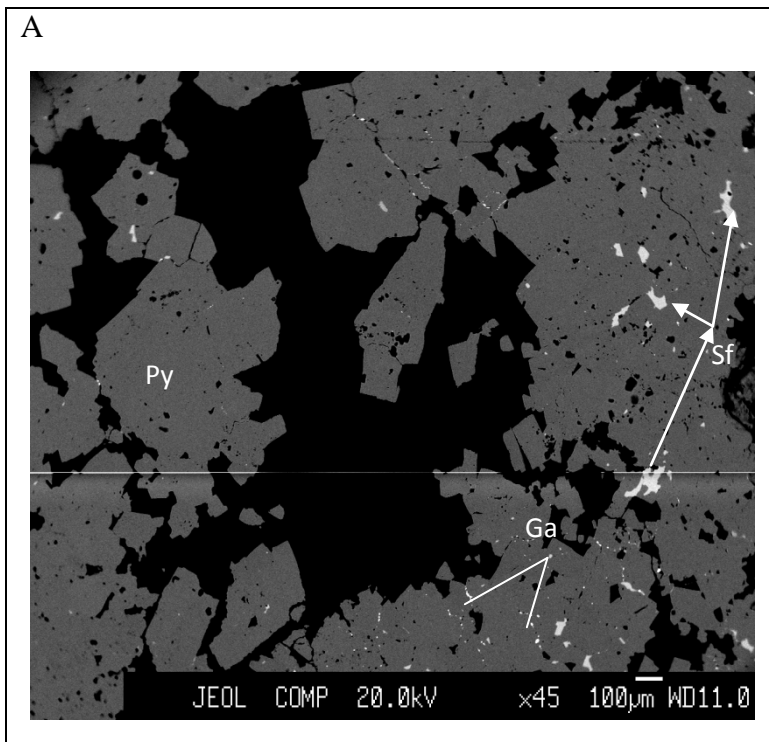
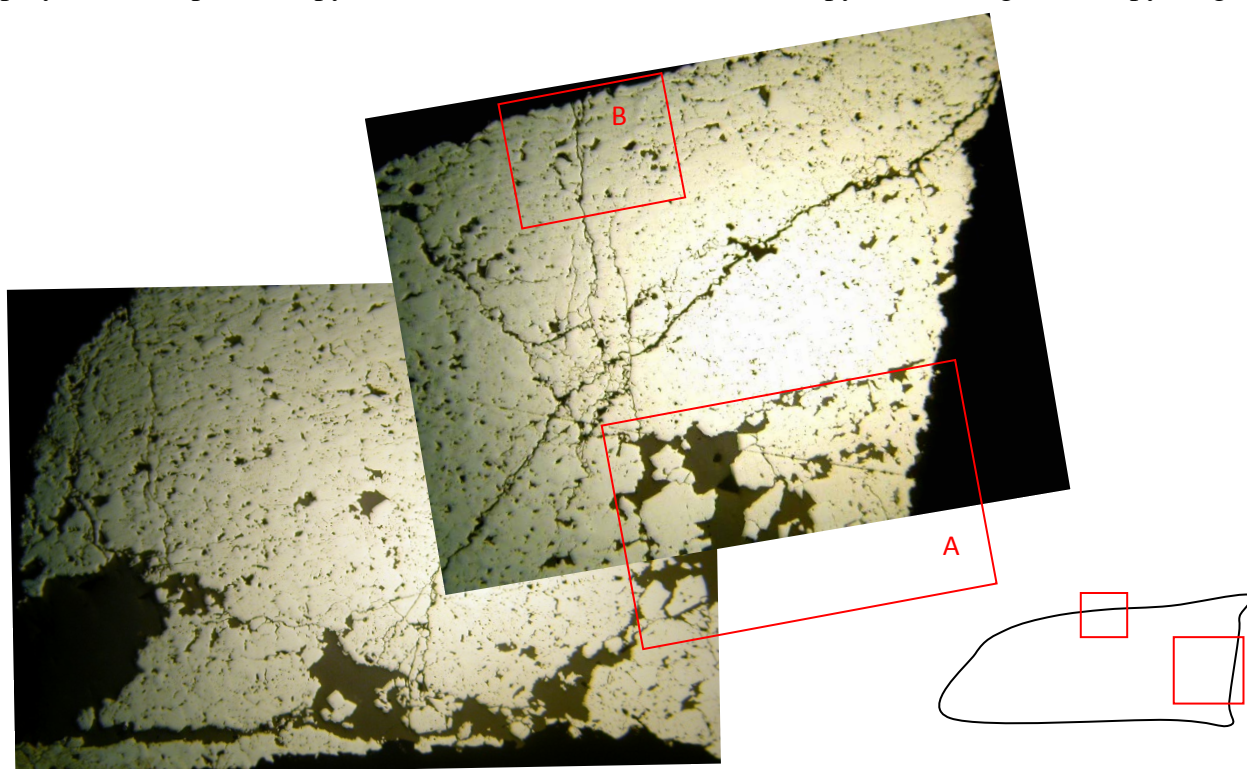


North Vojma deposit

Sample C 41/153

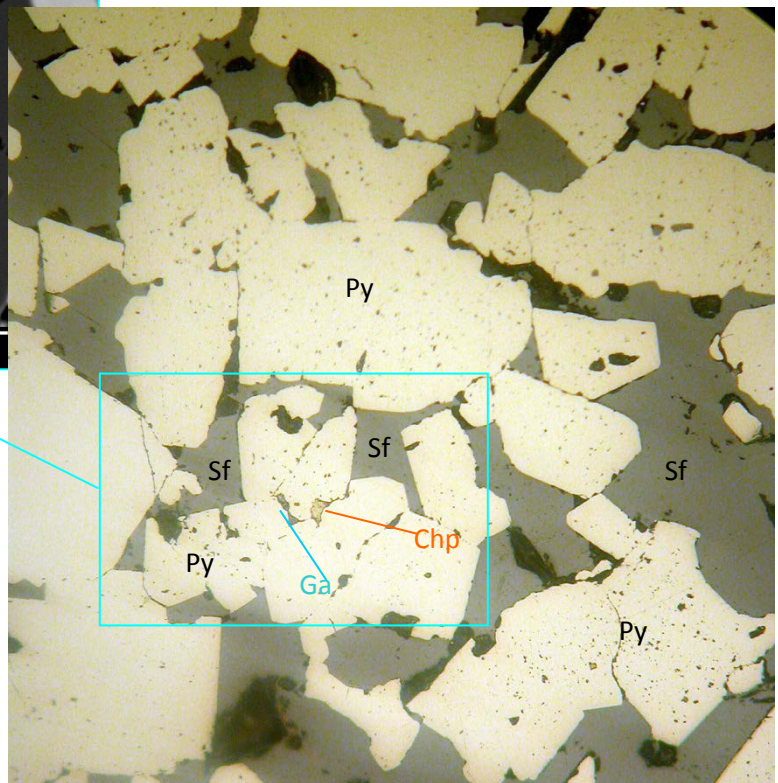
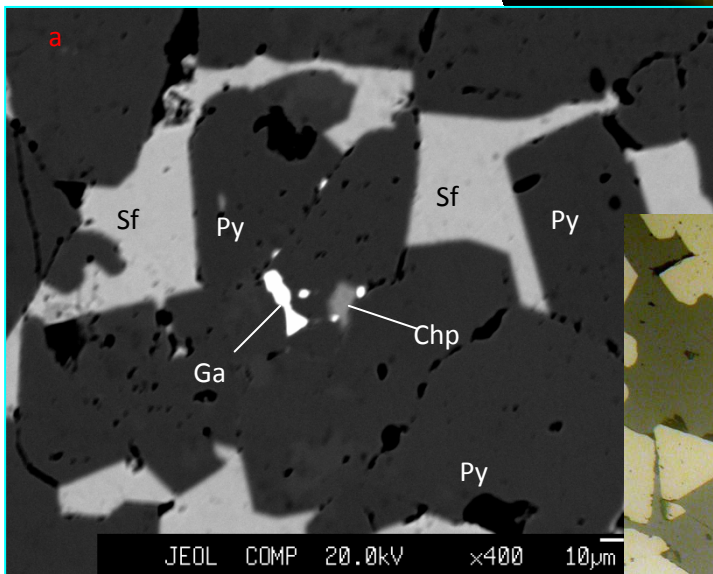
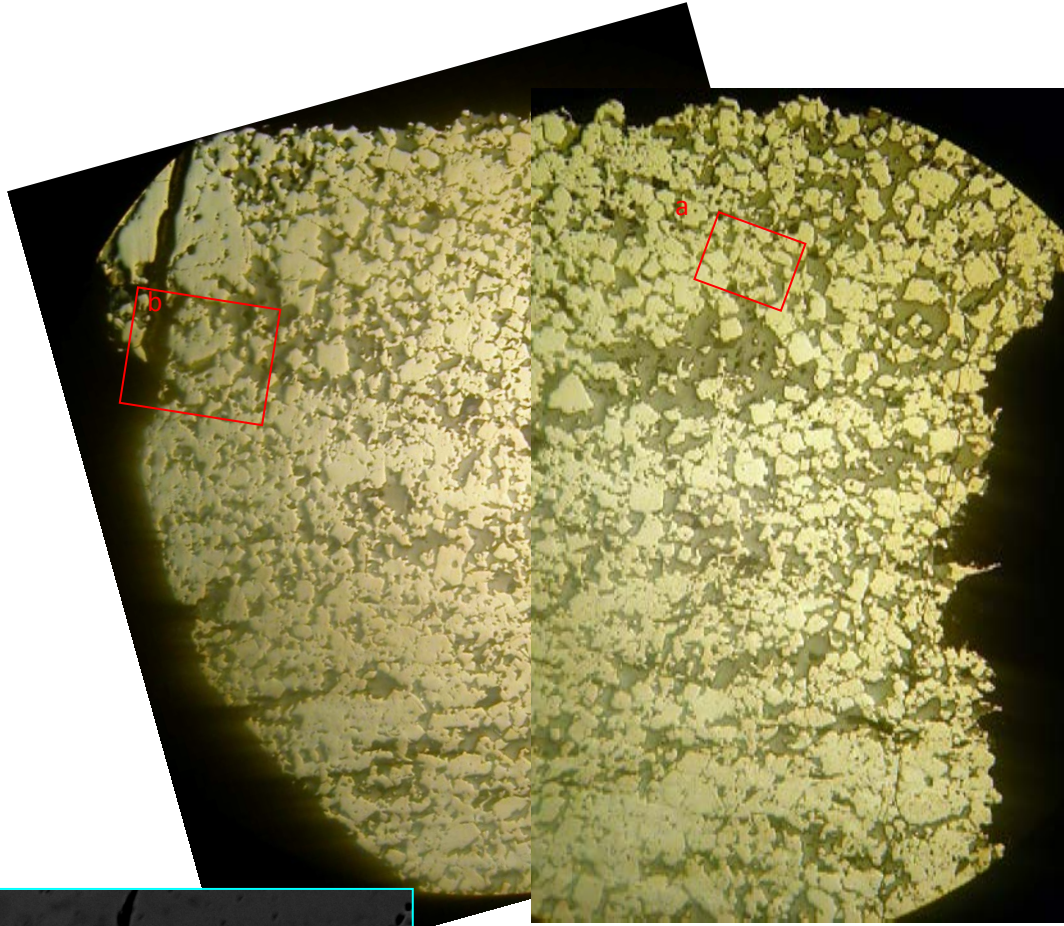
Pyrite-polymetallic (sphalerite-pyritic) ore with an admixture of chalcopyrite and single arsenopyrite grains.



Minerals	S	Fe	Cu	Zn	Pb	Total
Ga	14,87	3,96			78,47	97,29
Py	55,72	46,55				102,27
Chp	36,07	30,53	32,91			99,5
Sf	34,48	5,39		61,54		101,42

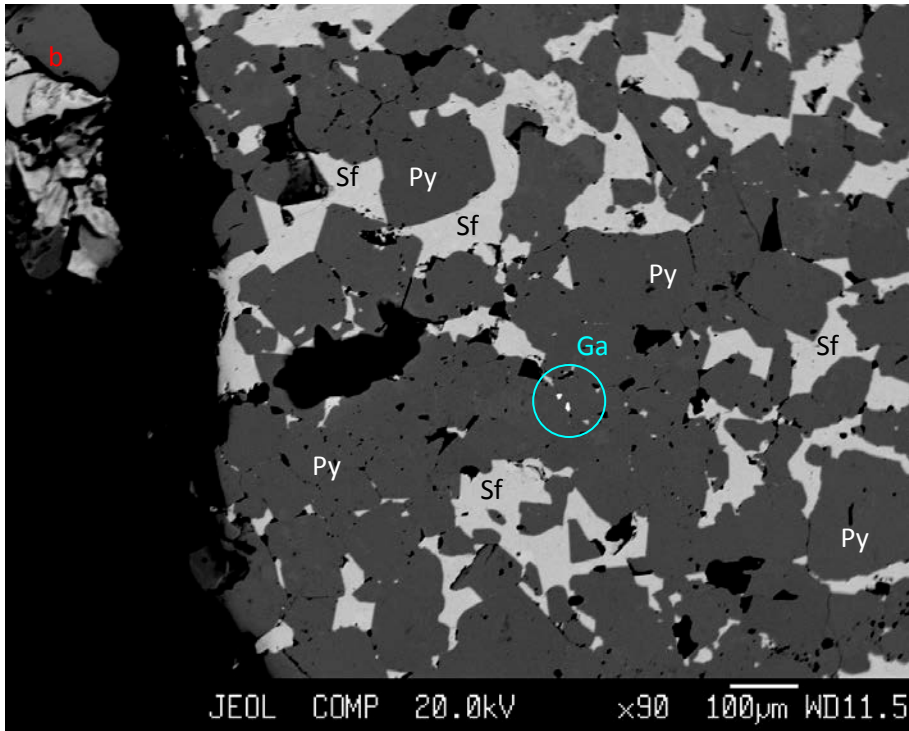
Sample C70-25

Massive close-grained rich pyritic ore with finely-layered zones



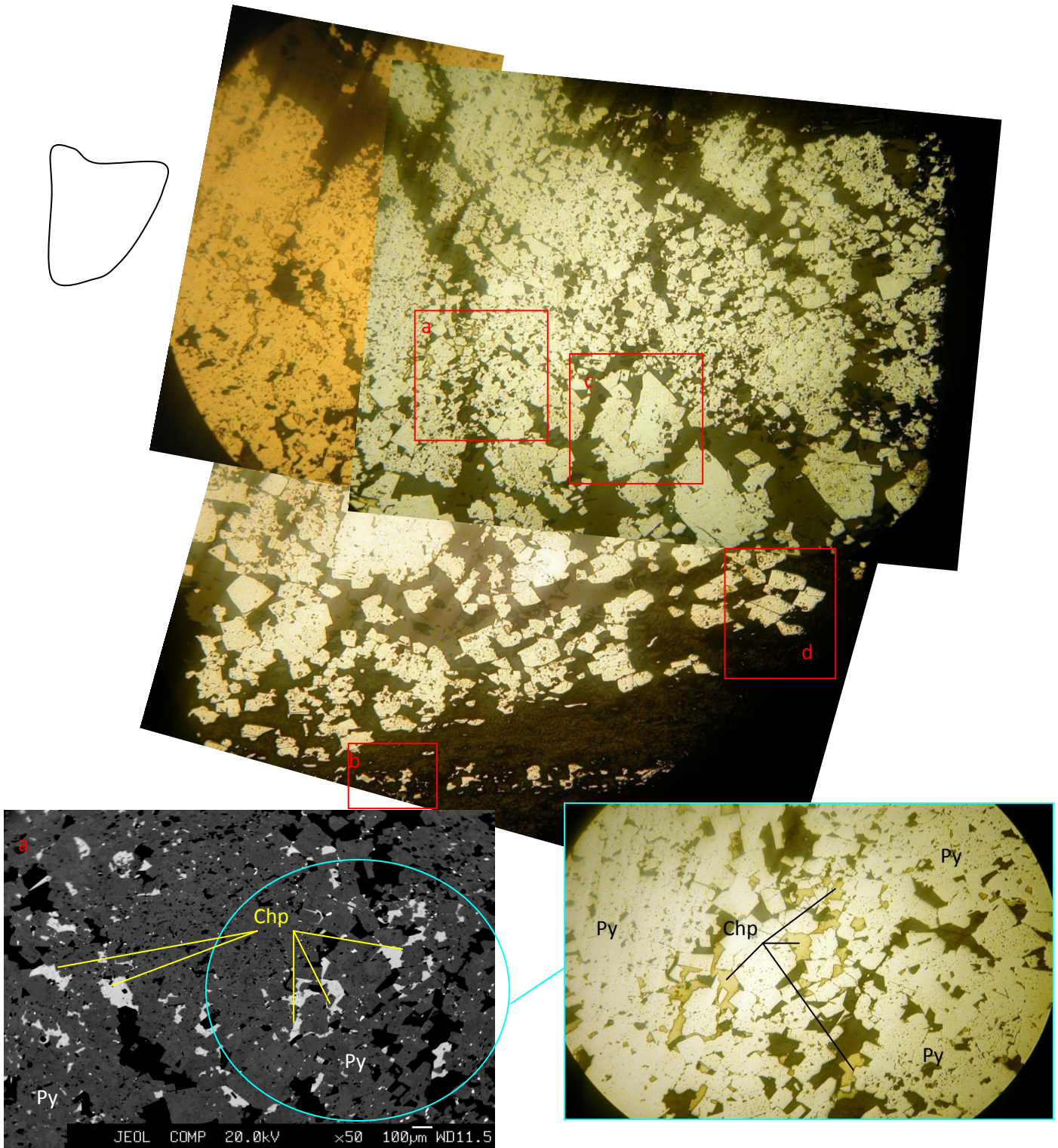
Minerals	S	Fe	Cu	Zn	Se	Ag	Sb	Pb	Total
Chp	35,96	31,05	33,42						100,43
Sf	34,83	6,02		61,78					102,63
Py	56,1	47,44							103,54
Se Ga	11,57	3,43		0,78	6,15			77,62	99,54
Ag-Se Ga	20,8	13,26		0,54	3,84	4,42		58,28	101,15
Gco	26,34	6,1	32,16	5,1		3,43	27,38		100,52
Ga	13,76	5,81			1,94			78,41	99,91

Bright white dots in Py – Ga.



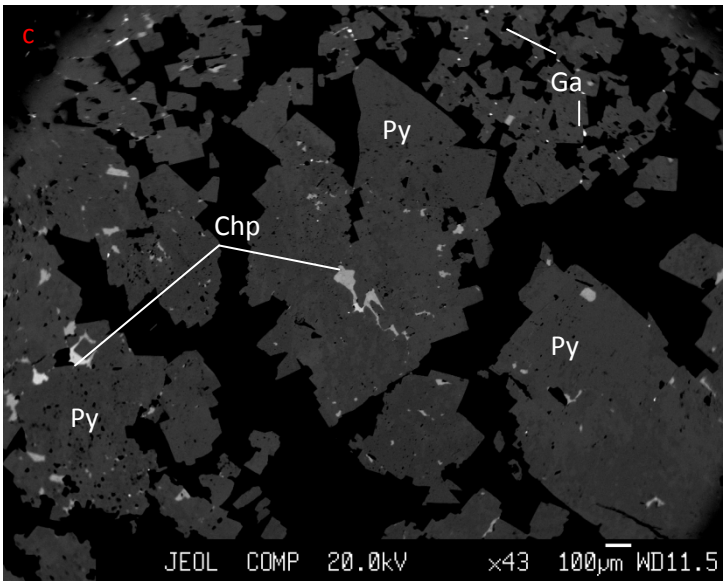
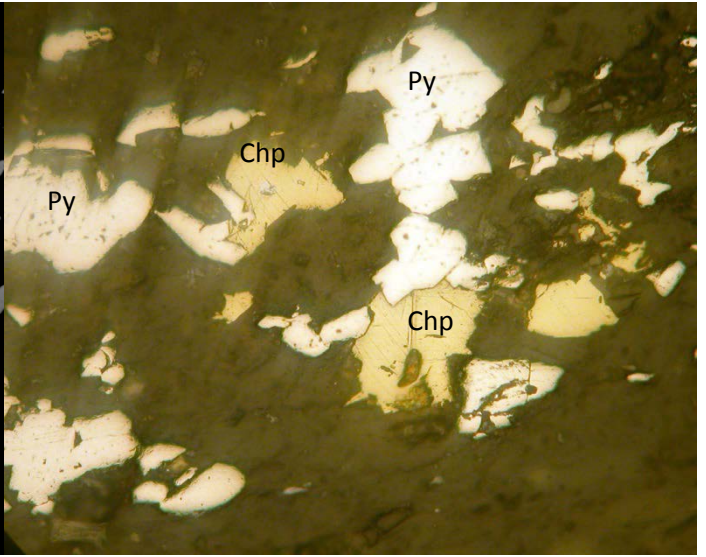
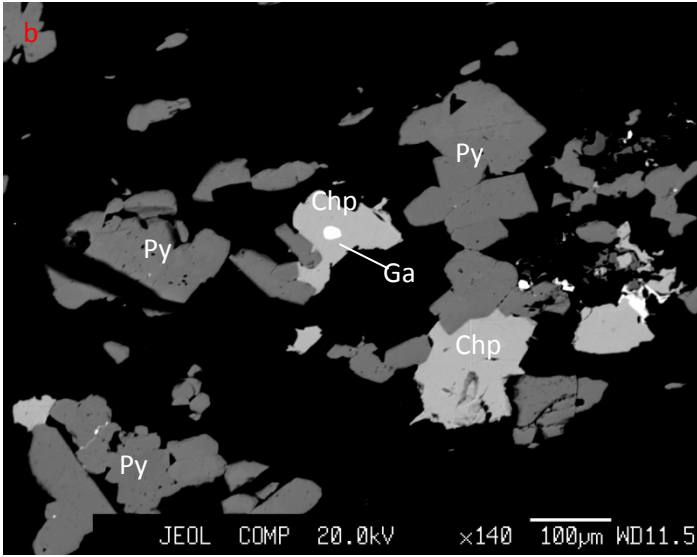
Sample C70-30

Uneven-grained banded rich pyritic ore. Layers are deformed in places. Pyrite grains are fine and medium.



The bulk of Py, in the repaired amount of Chp, frequent small inclusions of Ga, small grains of Pn are rare.

Minerals	S	Fe	Cu	Se	Pb	Total
Chp	35,95	30,94	33,54			100,43
Ga	13,62	1,28	1,61	1,23	83,69	101,44
Py	56,01	47,27				103,28
Pn	40,29	61,05				101,35



Ga - bright white dots in the photo, Chp - gray

