
332; 338

: , 2016, 4 (92), . 87–112

• • , • • , • •

()

-
-
.
,
.
,
-
(,
,).
-
,
-
,
-
.
,
-
:
, , , , ,
, , , , ,
-
,
-

1990-	2014	
1990-	2014	(57%)
1995-2005	2005-2007	
1995-2005	2005-2007	2010-2015
83%	(.1)	
.1		

()

I

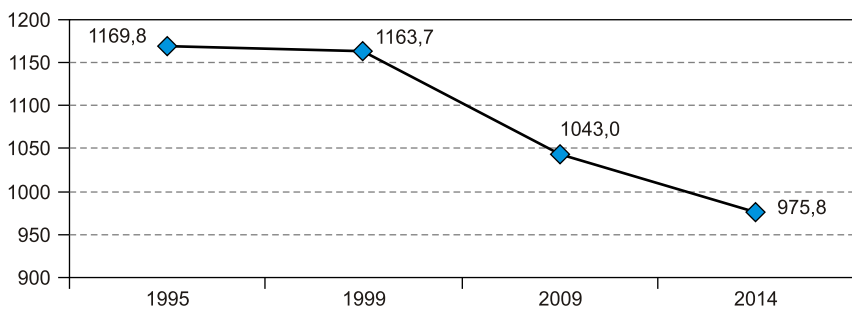
()	-			-, %		
	1995–2005	2005–2007	2010–2015	1995–2005	2005–2007	2010–2015
(,) -	3	5	5	10,0	16,7	16,6
	5	3	8	16,7	10,0	26,7
	22	22	20	73,3	73,3	56,7
	30	30	30	100,0	100,0	100,0

: , , , , .

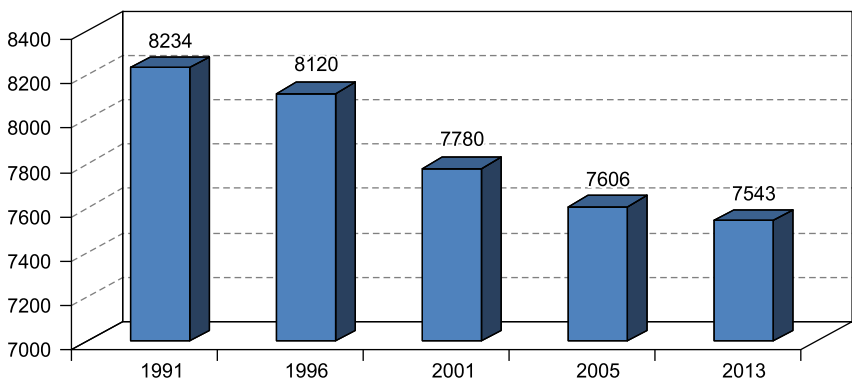
: - . 2005: . . / , 2006; - URL: <http://www.nso.ru/page/2262> ; - URL: <http://www.nso.ru/page/2550> .

(. 1), 1.

1 : (1995–1999): . . / , 2000; . -



. 1.



. 2.

. 1976 .

2013 . 1,5 .

1991–2013 . 0,7 (. 2).

(2009–2014 .): . ./
 . - , 2015.

()

2

1995–2014 . (30)

	-	
	1995	2014
	29	2
		11
	27	8
	29	16

1995–2014 ., -

(. 2).

(10), -

(5),

(6,5) . . -

: , , . -

(.3). 40% . 18 -

40%.

2014 . , 1995 . 2014 . -

1995 . 46% ,

43% - . -

: , , - . -

, (-).

1995 2014 .

- 3,2 . 1995 . -

, . 2014 .

	* ,		* ,		* ,		* ,		* ,		* ,	
	1995	2014	1995	2014	1995	2014	1995	2014	1995	2014	1995	2014
	78,5	43,0	18,4	5,7	85,2	32,8	3,8	3,2	3,0	0,0	3,0	0,0
	70,7	26,0	12,4	10,9	27,8	36,9	4,7	2,4	125,0	0,0	125,0	0,0
	64,9	37,5	32,5	13,9	81,5	46,7	3,6	2,2	79,0	0,0	79,0	0,0
	62,8	56,4	13,9	9,7	28,7	12,6	5,1	4,7	1238,0	0,0	1238,0	0,0
	74,4	41,5	16,4	10,5	32,5	27,4	4,2	1,8	413,0	53,6	413,0	53,6
	79,0	33,4	18,2	5,8	12,3	16,9	4,5	2,3	0,0	0,0	0,0	0,0
	123,8	85,7	65,2	34,0	272,1	15,2	11,0	30,1	121,0	12,9	121,0	12,9
	91,3	29,4	14,2	11,9	111,8	60,0	4,7	3,8	545,0	0,0	545,0	0,0
	43,2	26,9	9,1	8,3	13,6	18,8	3,9	2,4	516,0	0,0	516,0	0,0
	81,0	51,4	28,5	14,6	70,7	47,0	4,0	1,8	255,0	0,0	255,0	0,0
	119,1	102,6	49,0	22,4	125,6	76,4	5,8	10,3	114,0	0,0	114,0	0,0
	114,9	108,9	6,3	5,6	28,3	11,2	3,8	3,4	521,0	0,0	521,0	0,0
	175,4	149,8	20,1	12,5	38,4	47,2	6,1	6,0	116,0	0,0	116,0	0,0
	87,6	26,3	17,7	15,3	35,8	47,1	6,3	2,8	1421,0	0,0	1421,0	0,0
	160,5	95,0	35,8	10,6	143,2	36,1	4,3	4,0	715,0	720,5	715,0	720,5
	35,4	5,6	15,1	8,6	49,8	6,8	3,4	2,3	527,0	0,0	527,0	0,0

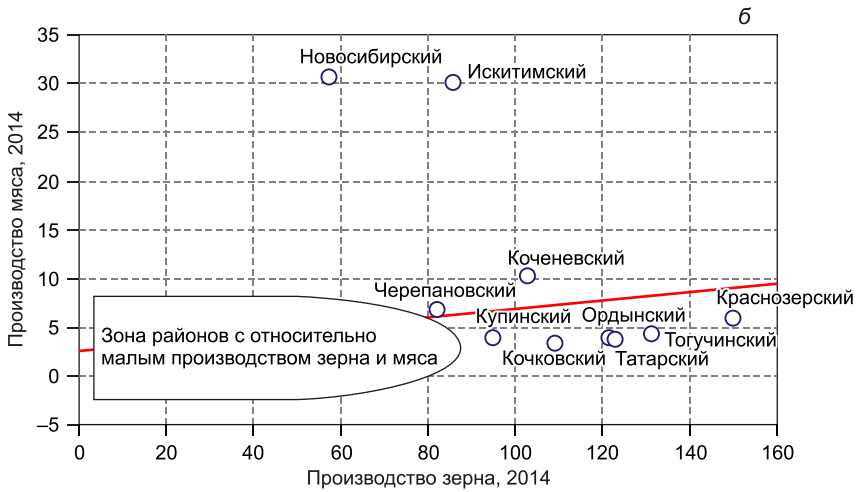
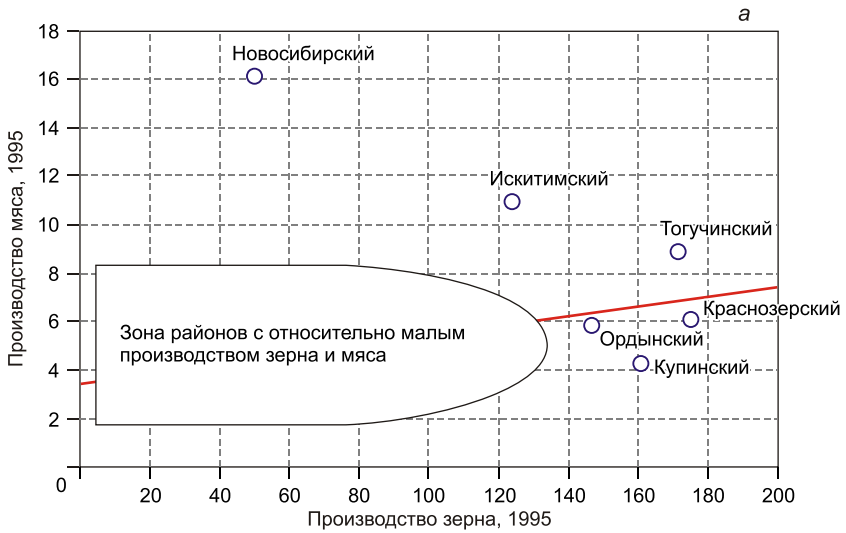
	* , . -		* , . -		* , . -		* , . -		* , . -	
	1995	2014	1995	2014	1995	2014	1995	2014	1995	2014
	56,3	43,4	17,8	7,7	53,1	17,5	4,1	1,5	366,0	0,0
	42,4	12,3	48,1	30,6	142,9	114,5	2,9	0,9	88,0	0,0
	50,0	57,5	117,2	49,5	539,2	336,9	16,1	30,6	0,0	0,0
	146,7	121,5	24,5	23,4	74,4	63,0	5,8	3,9	93,0	151,0
	17,5	5,0	10,5	5,7	33,7	7,8	2,0	1,2	268,0	0,0
	102,8	63,8	18,9	10,9	72,4	30,4	6,2	3,8	659,0	23,5
	102,1	122,9	16,0	12,8	63,6	58,7	4,9	3,8	1417,0	2053,0
	171,7	130,9	56,6	25,4	161,5	112,8	8,9	4,3	221,0	112,5
	48,5	13,7	10,8	9,1	18,9	18,8	3,4	2,4	45,0	0,0
	39,2	72,9	11,8	6,1	21,0	9,9	3,1	3,0	767,0	0,0
	47,4	31,4	17,7	9,4	27,5	32,5	4,5	2,5	1133,0	648,4
	122,0	82,0	40,3	14,1	82,2	40,3	5,9	6,9	82,0	0,0
	86,3	71,7	9,5	8,7	66,8	33,5	3,2	3,8	0,0	0,0
	69,0	35,7	16,4	10,9	30,2	26,3	4,2	2,0	384,0	0,0
	2564,4	1784,1	788,9	424,6	2544,7	1442,0	154,4	154,1	12232,0	3775,4

* **

1995 2014 .

1995 .
 ,
 ,
 2014 .
 ,
 1995 ., 10
 .
 2014 .
 :
 2%, 1995 ., 4,35% (.3) .
 (,)
 ,
 ,
 ,
 (.4) .
 ,
 2008–2013 .
 57–70%².
 , 2014 .,
 ,
 1995 .
 .

² .:
 . /
 ,2014.



. 3.

1995 . () 2014 . ()

— y —
; y 1995 = 3,4419 + 0,0199 · x, y 2014 = 2,5506 + 0,0435 · x

1	2 , 2013	3 2010–2013	4 (.3 : .2 × 100), %
()**	120,5	623,0/124,0***	5,2 / 103,3
	96,7	185,0	191,0
()	359,9	269,4	74,9
()	70,1	56,8	81,0
	11,0	11,2****	101,8
	260,0	310,0****	119,2
	13,1	9,9****	75,6

*

:

54. – URL: <http://www.garant.ru> ; 28 2013 .
 . – ., 2014. – URL: <http://mcx.ru/navigation/page/show/205.htm> .
 ** 1 80% (.: . – URL:
<http://girls4gils.ru/pererabotka-zerna/553-produkciya-vyrabatyvaemaya-iz-zerna-rzhi.html>).
 *** (2014 .).

2014 .

1980-

2014 .

-

-

-

« » , ,

,

-

-

, ,

,

-

,

,

,

-

-

-

.

,

-

(.. , [2; 3]).

,

-

[5-7].

-

-

[1].

-

, .

-

.

,

,

,

,

,

➤ ,

,

➤ ;

,

➤ ;

,

➤ , ;

,

(, ,) ;

➤ ,) ;

() , ;

➤ , ;



- -



- ; ,

, -

.

, -

, :

1)

.

, , ,

.

-4 -5,

-

, .

450 ;

2)

« »

50 .

(, ,)

.

,

(

100),

, .

, -

, ;

3)

12 . ,

4,5-5 . «

« ».

- , 50 . ,

, . . . , . . . , . . .

 , . . . 2014 . . . -
 , . . . , . . . , . . .
 4) 894 ; -
 5-10 . . . ; -
 :
 (. . .)
 « - »);
 5) « . . . » -
 » , . . . -
 . . . -15,14 . . . -
 , - 300; -
 6) « . . . ». -6,6 , -
 4 . . .
 7) 120 ;
 , . . . , . . . -
 ; -
 8) -
 ;
 9) -
 -
 -
 (« . . . »), -
 (« . . . »), -
 « . . . », « . . . »), « . . . », -
 « . . . », « . . . » .).
 . . . -
 , . . . , . . . -
 , . . . , . . . -

(, , ,).

-

.

-

3 . . .

-

-

,

, -

-

-

.

-

.

-

.

-

,

.

-

-

-

.

-

,

.

:

-

-

,

.

-

.

-

.

-

-

.

-

,

2030

,

-

,

-

.

:

-

-

.

, -
, , -
.
-
, -
, -
, -
.
-
-
, -
.
, -
, -
() , -
, -
.
« »
(-), « - »
« - », « », «M.A.D. Developing Agricultural Projects
Ltd.» (), « »
(), « - »
» « » ().
.
, -
.
-
-
, -
.
, -

. . . , . . . , . . .

 , . . . 6,4 . -
 , 7 . . . 260 . -
 . -
 17 (, , -
 , , , , , , , , -
 , , , , , , , , -
), -
 . -
 . -
 220 . , -
 -
 « » 2016–2018 ., 220 -
 -
 , -
 . -
 « — » . -
 -
 . -
 , -
 . -
 , -
 -

1. // . - 2015. -
1. - . 87-100.
2. // . - 2010. - 1. - . 55-67.
3. // . - 2014. - 4. - . 147-153.

4. ... // -
/ . .
... : - , 2014. -
. 141–144.

5. *Di Liberto A., Usai S.* TFP convergence across European regions: a comparative spatial dynamics analysis // *Geography, Institutions and Regional Economic Performance* / Ed. by R. Crescenzi and M. Percoco. – N.Y., 2013. – P. 39–58.

6. *Seltzer E., Carbonell A.* Regional planning in America: planning regions // *Regional Planning in America: Practice and Prospect* / Ed. by E. Seltzer and A. Carbonell. – Cambridge, MA, 2011. – P. 1–16.

7. *Wolfe D.A.* Civic governance, social learning and the strategic management of city-regions // *Creating Competitiveness: Entrepreneurship and Innovation Policies for Growth* / Ed. by D.B. Audretsch and M. Lindenstein. – Cheltenham, 2013. – P. 6–25.

(,) – -
,
(630090, -
, 17, e-mail: gvzhdan@ieie.nsc.ru).
(. -
,) – -

(630501, , ,
, e-mail: irer@ngs.ru); -

(630090, . . .
, 17, e-mail: irer@ngs.ru). -

(,) – -
, « » (630089, ,
, 1, e-mail: wrn@online.nsk.su); -

(630090, , . . .
, 17, e-mail: wrn@online.nsk.su).

DOI: 10.15372/REG20160404

Region: Economics & Sociology, 2016, No. 4 (92), p. 87–112

G.V. Zhdan, I.V. Shchetitina, Yu.P. Voronov

THE REINDUSTRIALIZATION OF RURAL ECONOMIES (CASE STUDY OF NOVOSIBIRSK OBLAST)

This article substantiates the need for the reindustrialization of economies in rural areas and its problems under current conditions. Novosibirsk Oblast was chosen as an example, since its local government together with these authors are now developing a program for the reindustrialization of regional economy. Having studied domestic and foreign experience, analyzed statistics and existing practices, we have suggested ways to overcome the problems related to the reindustrialization of rural economies at different administration levels (rural settlement, municipal district, subject of the Russian Federation). A problem-solving basis should be as follows: a comprehensive program-oriented and goal-oriented approach to managing the reindustrialization of rural economies; the formation of sectoral and territorial–industrial clusters; the selection of promising innovative projects and support for their implementation by state agencies and business. The article considers advanced experiences and promising innovative projects, submitted to the Government of Novosibirsk Oblast, that will significantly increase the efficiency of various kinds of business in rural areas.

Keywords: agroindustrial complex; infrastructure; production; reindustrialization; rural areas; economy; administration; government support

References

1. *Marshalova, A.S., V.I. Bakulina & G.V. Zhdan. (2015). Neeffektivnost gosudarstvennogo upravleniya – glavnyy faktor rossiyskogo otstavaniya [Inefficiency of state governance system as a main factor of Russia’s backwardness]. EKO, 1, 87–100.*
2. *Nayden, S.N. (2010). Differentsiatsiya pokazateley sotsialnogo razvitiya subyektov Rossiyskoy Federatsii [Differentiation of the Social Indicators in the RF Constituent Entities]. Prostranstvennaya ekonomika [Spatial Economics], 1, 55–67.*
3. *Novoselov, A.S., A.S. Marshalova & G.V. Zhdan. (2014). Analiz mekhanizmov i instrumentov regionalnoy politiki, reguliruyushchey formirovanie finansovo-ekonomicheskoy sredy subyekta Federatsii [Analysis of mechanisms and instruments of regional policy regulating the formation of financial and economic environment of subject of Federation]. Vestnik Kuzbasskogo gosudarstvennogo tekhnicheskogo universiteta [Vestnik of Kuzbass State Technical University], 4, 147–153.*

-
4. *Churashev, V.N., V.M. Markova; V.V. Kuleshov & N.I. Suslov* (Eds.). (2014). *Vzaimodeystvie korporatsiy i organov vlasti raznogo urovnya pri prognozirovanii razvitiya otraslevykh sistem TEK* [Interaction between corporations and authorities of different levels when forecasting the development of fuel and energy industry systems]. *Sistemnoe modelirovanie i analiz mezo- i mikroekonomicheskikh ob'ektov* [System modeling and analysis of meso- and microeconomic objects]. Novosibirsk, Institute of Economics and Industrial Engineering SB RAS, 141–144.
 5. *Di Liberto, A., S. Usai; R. Crescenzi & M. Percoco* (Eds.). (2013). *TFP convergence across European regions: a comparative spatial dynamics analysis*. *Geography, Institutions and Regional Economic Performance*. New York, 39–58.
 6. *Seltzer, E., A. Carbonell* (Eds.). (2011). *Regional planning in America: planning regions*. *Regional Planning in America: Practice and Prospect*. Cambridge, MA, 1–16.
 7. *Wolfe, D.A.; D.B. Audretsch & M. Lindenstein* (Eds.). (2013). *Civic governance, social learning and the strategic management of city-regions. Creating Competitiveness: Entrepreneurship and Innovation Policies for Growth*. Cheltenham, 6–25.

Information about the authors

Zhdan, Galina Vasilievna (Novosibirsk, Russia) – Candidate of Sciences (Economics), Senior Researcher at the Institute of Economics and Industrial Engineering, Siberian Branch of the Russian Academy of Sciences (17, Ac. Lavrentiev av., Novosibirsk, 630090, Russia, e-mail: gvzhdan@ieie.nsc.ru).

Shchetinina, Irina Vasilievna (Novosibirsk, Russia) – Doctor of Sciences (Economics), Professor, Head of Laboratory at the Siberian Research Institute of Agricultural Economics of the Siberian Federal Scientific Centre of Agro-Biotechnologies, Russian Academy of Sciences (Krasnoobsk, Novosibirsk Oblast, 630501, Russia, e-mail: irer@ngs.ru); Leading Researcher at the Institute of Economics and Industrial Engineering, Siberian Branch of the Russian Academy of Sciences (17, Ac. Lavrentiev av., Novosibirsk, 630090, Russia, e-mail: irer@ngs.ru).

Voronov, Yury Petrovich (Novosibirsk, Russia) – Candidate of Sciences (Economics), Director of Korpus OOO (1, Gorsky res. district, Novosibirsk, 630089, Russia, e-mail: wrn@online.nsk.su); Leading Researcher at the Institute of Economics and Industrial Engineering, Siberian Branch of the Russian Academy of Sciences (17, Ac. Lavrentiev av., Novosibirsk, 630090, Russia, e-mail: wrn@online.nsk.su).

15.08.2016 .

© 2016