
314.18

: , 2018, 2 (98), . 133–148

• •

,

.

,

,

.

2000–2014 .

«

».

,

,

,

.

:

;

;

;

;

,

,

, , -
 . -
 , , -
 () :

- 1 . . . , %;
- 10 . . . , %;
- , ;
- 1 . . . , %;
- ;
- 100 .

, [1].
 , -
 -

(). :

- , .;
- 1 . ;
- 100 . ;
- 0-14 ;
- , 1 .
- ;
-) 0-14 (, -
) 100 .

(I)

$$I = \frac{n}{i=1} \frac{A_i}{n}; \tag{1}$$

$$A_i = 100(x_i / s_i), (A_i^* = 100(s_i / x_i^*)) - \quad , \quad (2)$$

$$A_i = 100,$$

$$i- \quad ; x_i - \quad i- \quad ; s_i - -$$

$$i- \quad ; i = 1, \dots, 12, n = 6.$$

$$= \frac{\sum_{i=1}^6 A_i}{6} = \frac{A + A + A + A^* + A + A^*}{6}.$$

$$= \frac{\sum_{i=7}^{12} A_i}{6} = \frac{A + A^* + A^* + A^* + A^* + A^*}{6}.$$

$$(*) -$$

$$(2)).$$

10

$$2,15, -$$

$$) \quad (1).$$

10 (2000, 2005, 2006, 2008, 2009, 2010, 2011, 2012, 2013, 2014 .) 83 , -

(« »)³.

() . « »

3

(2)

	2000	2005	2006	2008	2009	2010	2011	2012	2013	2014
	2,8	2,8	2,8	3,2	3,2	3,2	2,8	2,8	2,8	2,8
, %	26,2	31,2	31,2	31,2	31,2	36,9	36,9	36,9	36,9	36,9
	79,9	81,1	81,4	81,9	82,0	82,2	82,5	82,5	82,7	82,8
, %	8,5	8,2	8,2	8,1	8,0	7,9	7,9	7,8	7,8	7,7
0-14 , %	30,2	28,1	27,8	27,2	26,9	26,7	26,6	26,4	26,3	26,2
100	4,27	3,24	3,24	3,24	3,28	2,53	2,53	2,53	2,53	2,6
	2,15	2,15	2,15	2,15	2,15	2,15	2,15	2,15	2,15	2,15
	3,68	2,98	2,84	2,62	2,48	2,42	2,33	2,21	2,15	2,09
	5,5	4,8	4,6	4,3	4,2	4,1	3,8	3,6	3,7	3,7
, %	1,59	1,70	1,70	1,54	1,63	1,61	1,71	1,71	1,70	1,70
	177,6	213,5	199,0	193,5	199,0	206,7	229,4	284,0	213,5	199,0
	82003	105490	101443	102137	106711	103367	109977	109547	108635	106499

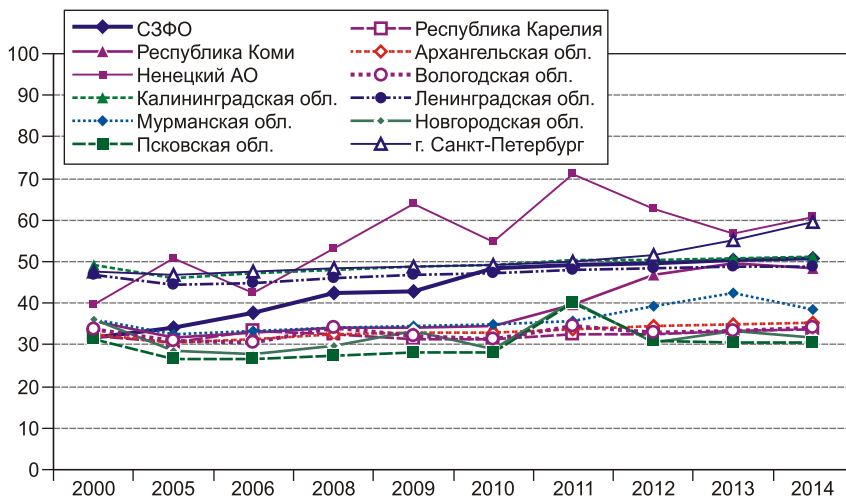
➤ ;
 ➤ ;
 ➤ ;
 () « »
 ➤ ;
 ➤ ;
 ➤ ;
 ➤ ;
 ➤ ;
 ➤ ();
 ➤ ;
 ➤ (, -
).
 -
 -
 « »
 (.2). , 2000 . 2
 - (31,8) - (77,6)
 . 2005 .
 , 2006 .
 2014 . :
 2000 . (-
 , - , , , (-
 - , , - , (-
).
 .
 2013 . , 14 2006
 - 18 9 . . (.3). -

(2000–2014 .)

	2000	2005	2006	2008	2009	2010	2011	2012	2013	2014
	49,4	36,4	38,1	42,5	43,0	41,9	44,0	44,0	45,8	44,9
	47,9	46,6	47,1	47,8	48,5	48,3	49,4	49,6	50,2	50,5
-	31,8	34,3	37,7	42,3	42,9	48,4	49,3	49,7	50,4	50,7
	53,7	37,1	38,6	52,0	52,3	50,4	50,7	46,8	51,9	50,7
-	77,6	60,9	61,4	62,6	62,2	63,8	62,3	62,9	63,8	64,0
	40,8	31,8	32,4	35,5	37,7	32,6	33,3	33,9	34,3	34,5
	44,5	36,7	39,7	40,8	45,1	40,3	58,0	58,9	53,6	55,7
	34,4	31,4	32,3	34,7	38,0	33,7	37,1	42,4	44,3	44,7
	35,4	32,0	33,0	33,4	33,8	33,6	33,9	39,9	43,1	44,0

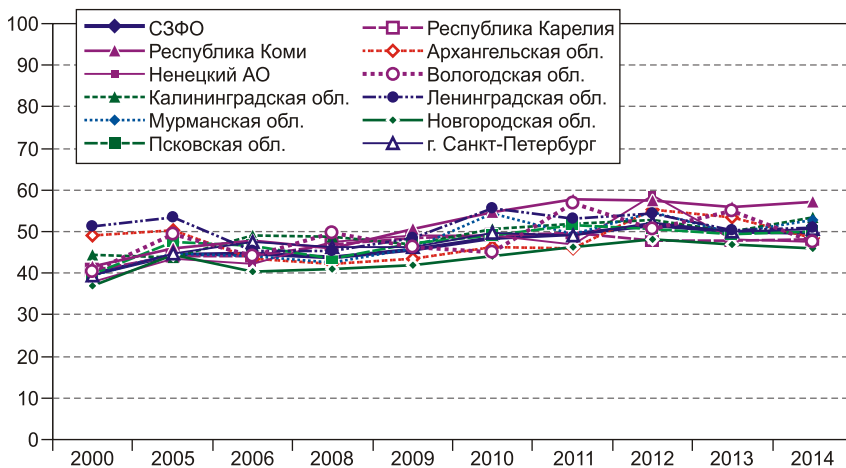
(2000–2014 .)

	2000	2005	2006	2008	2009	2010	2011	2012	2013	2014
	42,5	45,2	44,3	45,7	46,7	49,0	50,8	53,5	51,7	51,8
	41,8	44,6	44,0	46,2	46,9	48,9	50,7	53,8	51,3	51,8
-	39,7	44,3	44,6	43,9	45,5	48,6	49,3	51,6	49,9	49,8
	48,9	50,0	47,5	45,7	53,7	55,7	53,3	55,7	54,9	57,5
-	57,5	58,4	55,8	56,3	57,6	57,7	59,1	60,4	56,8	55,9
	43,3	45,6	44,4	45,5	47,1	49,2	51,8	55,6	53,6	54,7
	43,1	45,6	44,8	46,7	48,5	51,7	53,0	55,2	54,5	56,0
	42,3	43,7	43,7	46,6	46,7	49,8	51,6	54,5	53,0	51,8
	40,3	42,4	41,7	42,4	43,5	45,7	49,3	50,5	47,4	48,9



. 2.

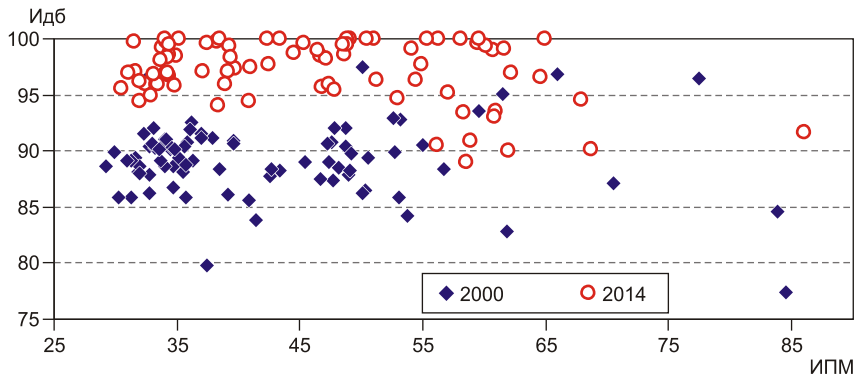
2000–2014



. 3.

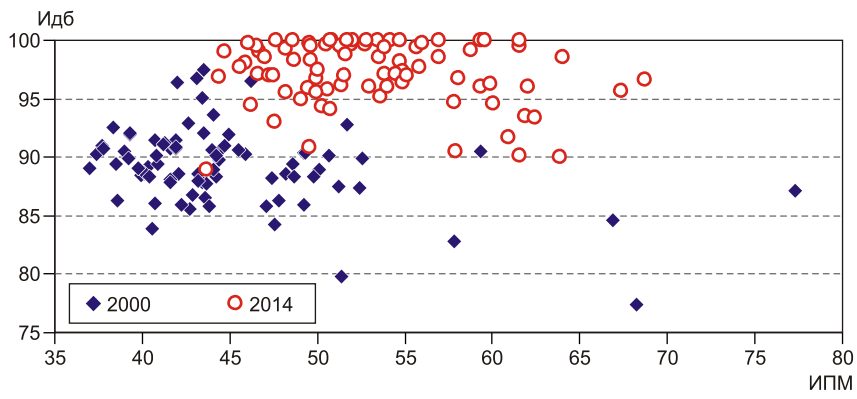
2000–2014

,
 :
 (9 . .), (5 . .)
 ,
 , 2000 2014 .
 ()
 11 . . – 77 88.
 ,
 100%-
 (20 40)
 46 36, (40 60) – 30
 36, (60 80) – 10,
 (80) – ,
 (. 4).



. 4.
 ()
 2000–2014 .

14
 10 ... (.5).
 (60 80)
) 12 (, , ,
 , - , , -
 , , , , -
). 2012 .
 (20 40), ... 14 , 2000 .
 (, , , ,
 , , , ,
 , , , ,
), (70
 2012 .).
 2012 . 10
 100% (, , ,



.5.
 (-)
 2000–2014 .

5. // :
– 2016. – 3 (91). – .76–97.

(,) –
(160014, ,
, 56 , e-mail: mashkop@mail.ru).

DOI: 10.15372/REG20180206

Region: Economics & Sociology, 2018, No. 2 (98), p. 133–148

M.A. Lastochkina

MEASURING DEMOGRAPHIC WELL-BEING OF REGIONS

The article introduces a methodological toolkit for analyzing the current trends of demographic development on complex indicators, which assesses the demographic development of territories in tune with their modernization development level. The demographic well-being of a region is viewed as a combination of qualitative and quantitative characteristics of the population expressed in the population's structure, social peculiarities, and mobility. Based on the selected indicators, we propose integral indicators to measure the demographic well-being and children's potential in Russian regions over the period between 2000 and 2014. An information system «Population and Modernization» was made to automate the calculation. The proposed approach allows presenting multidimensional data as a single variable with computed arguments, where different indicators are combined, including all target values, and carrying out analysis in combination with other factors. Indices can be used to develop measures of regional demographic and social policies for making managerial decisions to ensure sustainable demographic development of a territory.

Keywords: demographic well-being; children's potential; modernization development; region; indices

*The publication is prepared within the framework of the project
No. 16-18-00078 supported by funding from the Russian Science Foundation*

References

1. *Mingaleva, Zh.A. & M.V. Igoshev.* (2011). Formirovanie sovremennogo demograficheskogo potentsiala kak osnova strukturnoy modernizatsii ekonomiki [Formation of the modern demographic potential as the basis for the structural economic modernization]. *Rossiyskoe predprinimatelstvo* [Russian Journal of Entrepreneurship], 2-1 (177), 24–30.
2. *Lapin, N.I. & He Chuanqi* (Eds.). (2011). *Obzornyy doklad o modernizatsii v mire i Kitae (2001 – 2010)* [An Overview Report on Modernization in the World and China]. Moscow, Ves Mir Publ., 256.
3. *Belyaeva, L.A. & N.I. Lapin* (Eds.). (2013). *Problemy sotsiokulturnoy modernizatsii regionov Rossii* [The Problems of Socio-cultural Modernization of Russian Regions]. Moscow, Academia Publ., 416.
4. *Timakov, V.* (2016). *Sravneniya, kotorykh boitsya Zapad* [Comparisons frightening the West]. Available at: http://rusnext.ru/recent_opinions/1466351547 (date of access: 15.11.2017).
5. *Chudaeva, O.V., N.E. Smirnova & S.V. Soboleva.* (2016). *Mnogoregionalnyy analiz dinamiki demograficheskikh riskov na territorii Sibiri* [The dynamics of demographic risks in Siberia: a multiregional analysis]. *Region: ekonomika i sotsiologiya* [Region: Economics and Sociology], 3 (91), 76–97.

Information about the author

Lastochkina, Mariya Aleksandrovna (Vologda, Russia) – Candidate of Sciences (Economics), Senior Researcher at the Institute of Socio-Economic Development of Territories, Russian Academy of Sciences (56A, Gorky st., Vologda, 160014, Russia, e-mail: mashkop@mail.ru).

05.03.2018 .

© . . ., 2018