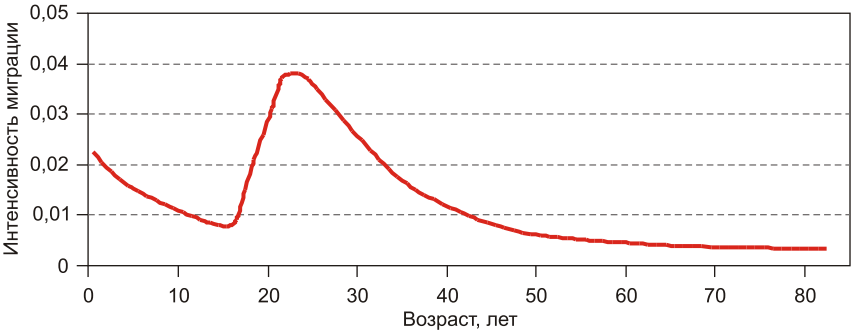


[33] , -
 [22], [24], -
 [23; 30], -
 « » [16].
 « », (.1) (-
), ([2; 4; 6; 14].
 18 - [5].



. 1. : [30]

, -
 . -
 , -
 [21; 25; 29]. -
 . . . 1
 , -
 . -
 , -
 [27; 31; -
 32]. -
 , -
 , -
 , -
 [24; 28]. -
 [11; 13] -
 , -
 , -
 , -
 [1; 9]. -
 , -
 , -
 , -
 , -
 . . . [20], -
 [18] , -
 , -

1 : -
 . 107–116. // . – 2015. – 3 (49). –



« » . -

, , -

,

,

[17]. -

,

—

,

,

..”

.

,

,

(

,

,

,

)

.

17

,

,

.

.

[26]

,

:

;

,

«

»

;

;

;

;

;

«

»

.

,

.

,

,

«

»

,

,

.

,

,

[19],

.

[26]

,

,

.

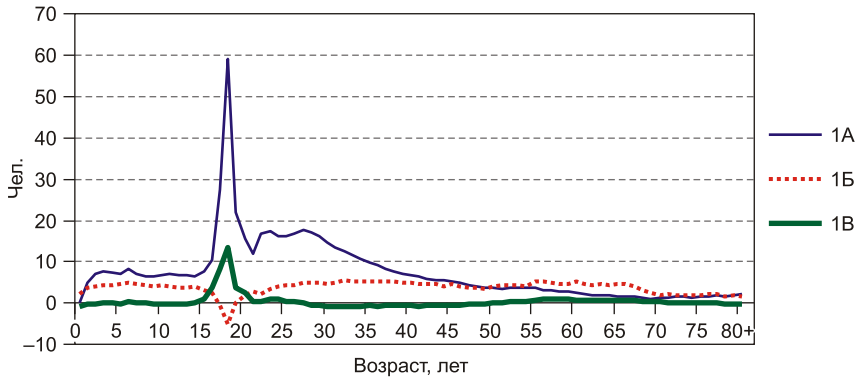
,

.

,

:

. -
 2011-2015 . -
 () -
 , -
 .
 / .
) / (.
 , .
 / , -
 : ,
 18 -
 95%, -
 - 153%. .
 , .
 :
 1 - , .
 20 ; .
 2 - , .
 63 .
 (. 2), , **I** -
 .



. 2. 1000 1 2011–2015 .,

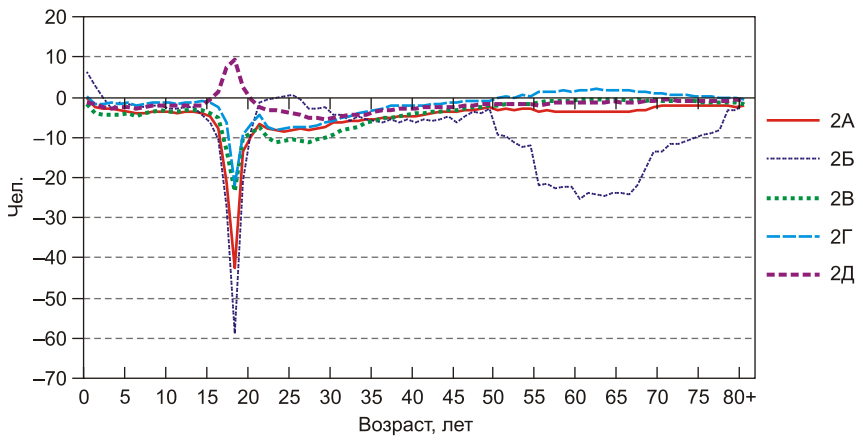
1000

I

[6].

25–35

() 0 , -
 , -
 , -
 , [10].
 I , -
 , 18 , -
 , -
 , -
 20-30 , -
 , -
 - -
 I , -
 , (5-25%)
 1 (50-100%).
 , , -
 , -
 1 . , -
 , -
 , -
 20-30 . - , -
 , 2 (. 3), -
 , -
 « » , 18 -
 , -
 , -



3. () 2
 2011–2015 ., 1000 .

2

,

,

2

,

(50%) (), 18

,

,

,

(20–35),

.....

2 18 50%.

2 20-40

2

« 2 ».

/

()

(18),

),

»,

20-30/35

(,)
(,)

35-45

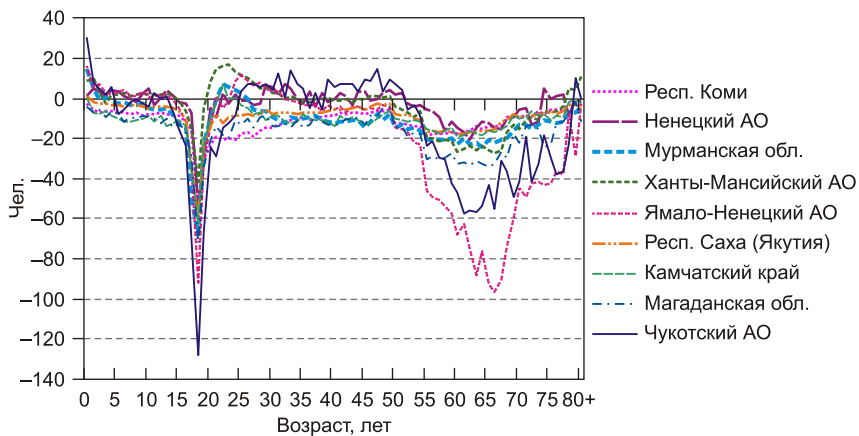
45

2 ()

) 2 (

).

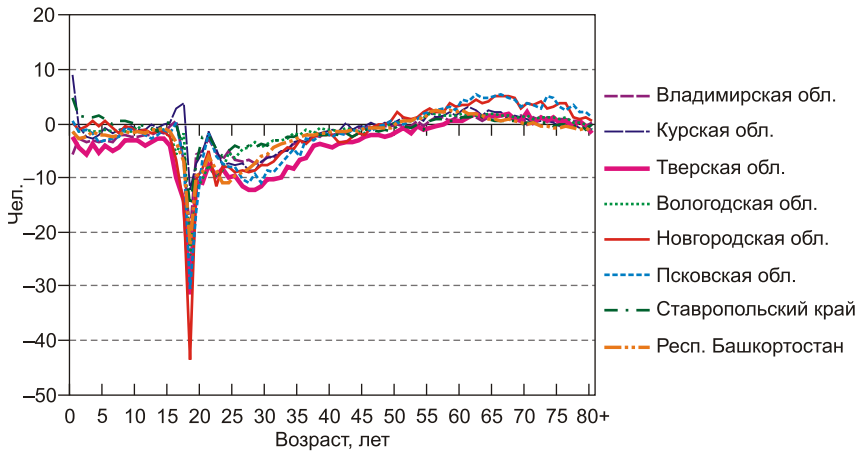
2



. 4. ()

2

2011–2015 ., 1000 .



. 5. () 2
 2011–2015 ., 1000 .

—

,

,

2 ,

,

—

.

—

—

,

,

,

—

:

—

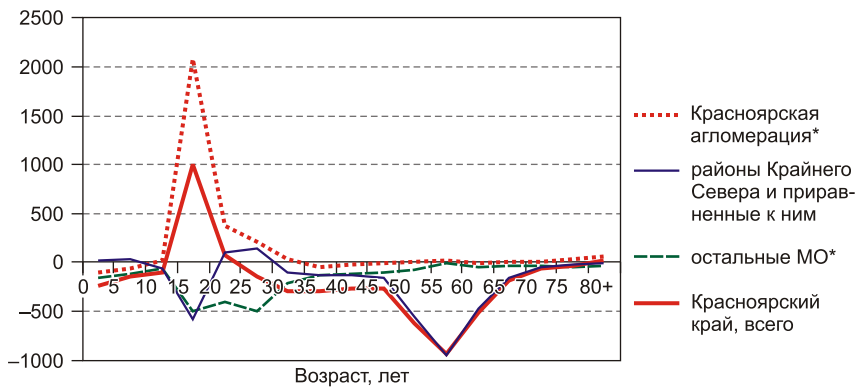
—

), ((—

) , , -
 , - , -
 , -
 , ([7]).
 , ()
 ,
 , 3.
 , -
 , 1,3 . (2014 .): .
 , 0,45

³ .: *Karachurina L., Mkrtychyan N.* Age-specific net migration patterns in the municipal formations of Russia // *GeoJournal*. – DOI: 10.1007/s10708-016-9757-4 (in press).

0,9 . -
 (. 6). -
 , 30 -
 , -
 , 200 . ,, -
 , 15-19 . . . -
 « » -
 [3].
 (- -
 , , ,), - -
 50-64 , -



. 6. () 2012-2015 . . .

(URL: <http://www.gks.ru/dbscripts/munst/munst04/DBInet.cgi>)

.*

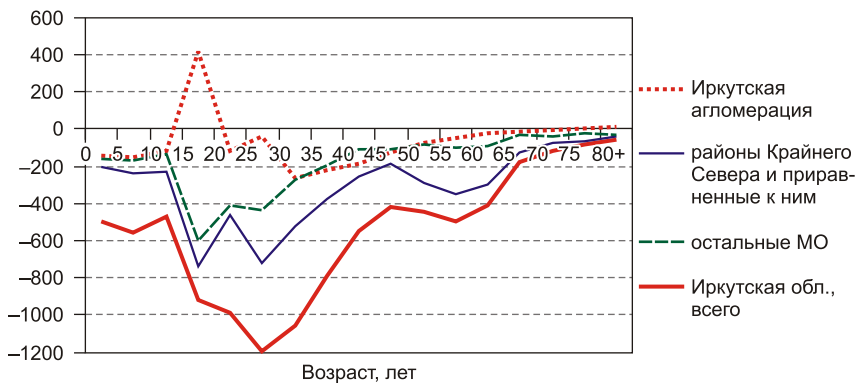
20–29 ,

1 . (2014 .), 0,55

0,8

15–19 ,
(. 7).

(. 7).



. 7. () 2012–2015 . . .

(URL: <http://www.gks.ru/dbscripts/munst/munst04/DBInet.cgi>)

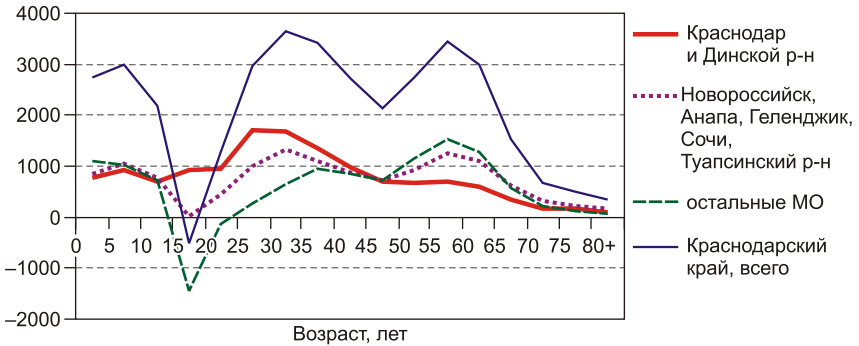
1,2

1 . (2014 .),

3,2

25–34- (.8), ,

15–19 .



. 8.

()

2012–2015 ., . .

(URL: <http://www.gks.ru/dbscripts/munst/munst04/DBInet.cgi>)

20-34

()

17-18

()

« »

[34].

« »

.
 -
 ,
 -
 -
 -
 .
 -
 (« »)
 [8]
 ,
 ,
 .
 .
 ,
 -
 ,
 ,
 .

« » (2017 .)

1. . . .
 // / .
- ., 1980. - . 28-85.

4 ,
 : (
) , - , .

-
2. . . . -
- : -
(-2012.- 2.- .15-28. -
 3. . . . :
)// .-2014.- 5 (97).- .189-208. (
 4. . . . : //
90- / . . . -
.- ., 1999.- .269-276. -
 5. . . . ? – URL: <http://demoscope.ru/weekly/2014/0581/demoscope581.pdf> (19.02.2017). -
 6. . . . : //
.-2016.- 3.- .169-203. -
 7. . . . : // : -
.-2014.- 3 (83).- .267-286. -
 8. . . . : , 1988.- 253 . / . . -
 9. . . . : /
. . . . ; .21.- ., 1998.- 104 . -
 10. . . . : , -
, ? – URL: <http://demoscope.ru/weekly/2012/0517/demoscope517.pdf> (19.02.2017). -
 11. . . . : -
// .-2000.- 1.- .28-35. -
 12. . . . 2012: /
.- .: , 2014.- .309-317. -
 13. . . . :
//
.-2013.- 1.- C. 150-153. -
 14. . . . : , -
// -2014.- 2.-
.161-178. -
 15. . . . : -
. – URL: <http://demoscope.ru/weekly/2005/0185/analit03.php> (23.02.2017). -
 16. *Argent N., Walmsley J.* Rural youth migration trends in Australia: An overview of recent trends and two inland case studies // *Geographical Research*. – 2008. – No. 46 (2). – P. 139–152. -

17. *Fielding A.J.* Inter-regional migration and social change: a study of South East England based upon data from the Longitudinal Study // Transactions – Institute of British Geographers. New Series. – 1989. – No. 14 (1). – . 24–36.

18. *Findlay A.M., Stockdale A., Findlay A., Short D.* Mobility as a driver of change in rural Britain: An analysis of the links between migration, commuting and travel to shop patterns // International Journal of Population Geography. – 2001. – No. 7 (1). – P. 1–15.

19. *Geist C., McManus P.* Geographical mobility over the life course: motivations and implications // Population, Space and Place. – 2008. – No. 14 (4). – P. 283–303.

20. *Kalogirou S.* Examining and presenting trends of internal migration flows within England and Wales // Population, Space and Place. – 2005. – No. 11 (4). – . 283–297.

21. *Kley S.* Explaining the stages of migration within a life-course framework // European Sociological Review. – 2011. – No. 27 (4). – . 469–486.

22. *Lee E.S.* theory of migration // Demography. – No. 3 (1). – P. 47–57.

23. *Little J.S., Rogers A.* What can the age composition of a population tell us about the age composition of its out-migrants? // Population, Space and Place. – 2007. – No. 13 (1). – . 23–39.

24. *Litwak E., Longino C.F.* Migration patterns among the elderly: A developmental perspective // The Gerontologist. – 1987. – No. 27 (3). – P. 266–272.

25. *Morrill R.* Aging in place, age specific migration and natural decrease // The Annals of Regional Science. – 1995. – No. 29 (1). – . 41–66.

26. *Plane D., Heins F.* Age articulation of U.S. inter-metropolitan migration flows // Annals of Regional Science. – 2003. – No. 37 (1). – . 107–130.

27. *Plane D., Jurjevich J.* Ties that no longer bind? The patterns and repercussions of age-articulated migration // The Professional Geographer. – 2009. – No. 61 (1). – . 4–20.

28. *Raymer J., Abel G., Smith P.* Combining census and registration data to estimate detailed elderly migration flows in England and Wales // Royal Statistical Society. – 2007. – No. 170 (4). – . 891–908.

29. *Rerat P., Piguat E., Besson R., Soderström O.* Age structure of Swiss cities: Residential mobility, life course and attractiveness // Geographica Helvetica. – 2008. – No. 63 (4). – P. 261–271.

30. *Rogers A., Castro L.* Model migration schedules / Research report RR-81-30. II ASA. – Laxenburg, Austria, 1981. – 84 p.

31. *Sander N., Bell M.* Migration and retirement in the life course: An event history approach // Journal of Population Research. – 2014. – No. 31 (10). – . 1–27.

32. *Stockdale A.* The role of a «retirement transition» in the repopulation of rural areas // Population, Space and Place. – 2006. – No. 12 (1). – . 1–13.

33. *Thomas D., Heberle R., Hutchinson E. et al.* Research Memorandum on Migration Differentials / Social Science Research Council. – N.Y., 1938. – Bulletin 43. – 7 p.

34. *Whisler R.L., Waldorf B.S., Mulligan G.F., Plane D.A.* Quality of life and the migration of the college-educated: A life-course approach // Growth and Change. – 2008. – No. 39 (1). – P. 58–94.

«...» (101000, ..., 20, e-mail: lkarachurina@hse.ru).

«...» (101000, ..., 20, e-mail: nmkrtchyan@hse.ru).

DOI: 10.15372/REG20170405

Region: Economics & Sociology, 2017, No. 4 (96), p. 101–125

L.B. Karachurina, N.V. Mkrtchyan

AGE SPECIFIC OF INTERREGIONAL MIGRATION IN RUSSIA

This article analyzes differences between age-specific interregional migration profiles in Russia and their features. The study relies on the data on internal interregional migration by one-year age groups for the period of 2011–2015, and data on migration between municipal formations by five-year age groups for the period of 2012–2015. The primary method of analysis is to classify age-specific migration profiles. We divided the regions of Russia into two types: with net interregional migration gain and with net migration loss. Then we defined sub-types of regions differed by migration gain (loss) in the key age groups and by age-specific migration rates. The article shows and explains variations in indices of the age-specific intensity of net interregional migration, as well as highlights the impact of migration on the age structure of the population in regions.

Keywords: age; index of the age-specific intensity of net migration; inter-regional migration; regions

The study is prepared within the framework of the Basic Research Program at the National Research University Higher School of Economics (2017)

References

1. *Veldanova, I.Yu. & Zh.A. Zayonchkovskaya* (Ed.). (1980). Demograficheskie osobennosti migratsii selskogo naseleniya v SSSR [Demographic features of migration of the rural population in the USSR]. Regionalnye osobennosti migratsii naseleniya SSSR [Regional Features of Migration Processes in the USSR], 28–85.
2. *Zamyatina, N.Yu.* (2012). Metod izucheniya migratsiy molodezhi po dannym sotsialnykh Internet-setey: Tomskiy gosudarstvennyy universitet kak tsentr proizvodstva i raspredeleniya chelovecheskogo kapitala (po dannym sotsialnoy Internet-seti VKontakte) [The method of studying the migration of young people on social networking data: Tomsk State University as a center of production and distribution of human capital (according to the social online network VKontakte)]. Regionalnye issledovaniya [Regional Research], 2, 15–28.
3. *Zamyatina, N.Yu.* (2014). Sotsialnaya lesotundra: geograficheskaya podvizhnost kak element semeynykh traektoriy zhitel'ev severnykh gorodov (na primere Noril'ska i Dudinki) [Social forest-tundra: Geographical mobility as an element of the family trajectories of the northern urban population]. Neprikosnovennyi zapas [NZ: Debates on Politics and Culture], 5 (97), 189–208.
4. *Katrovskiy, A.P. & Zh.A. Zayonchkovskaya* (Ed.). (1999). Uchebnaya migratsiya v vuzy Rossii: faktory i motivatsiya [Educational migration in Russian universities: factors and motivation]. Migratsiya i urbanizatsiya v SNG i Baltii v 90-e gody [Migration and Urbanization in the CIS and the Baltics in the 1990s]. Moscow, 269–276.
5. *Kashnitskiy, I.* (2014). Chto v vozraste tebe moem? [What means my age to you?]. Available at: <http://demoscope.ru/weekly/2014/0581/demoscope581.pdf> (date of access: 19.02.2017).
6. *Kashnitskiy, I.S., N.V. Mkrtchyan & O.V. Leshukov.* (2016). Mezhtseoblastnaya migratsiya molodezhi v Rossii: kompleksnyy analiz demograficheskoy statistiki [Inter-regional Migration of Youths in Russia: A Comprehensive Analysis of Demographic Statistics]. Voprosy obrazovaniya [Educational Studies], 3, 169–203.
7. *Kirillov, P.L. & A.G. Makhrova.* (2014). Prostranstvenno-ierarkhicheskaya differentsiatsiya tsen na zhilye mezhdru rossiyiskimi gorodami [Spatial and hierarchical differentiation of accommodation prices among Russian cities]. Region: ekonomika i sotsiologiya [Region: Economics and Sociology], 3 (83), 267–286.
8. *Korel, L.V., V.S. Tapilina V.A. Trofimov & F.M. Borodkin* (Ed.). (1988). Migratsiya i zhilishche [Migration and Housing]. Novosibirsk, Institute of Economics and Industrial Engineering SB RAS Publ., 253.
9. *Maleva, T.* (1998). Problemy severnoy migratsii: Pechorskiy ugolnyy basseyn [Problems of Northern Migration: Pechora Coal Basin], Iss. 21. Moscow, Carnegie Moscow Center, 104.

-
10. *Makhrova, A.G., T.G. Nefedova & A.I. Treivish.* (2012). Moskva: megapolis, aglomeratsiya, megalopolis? [Moscow: megapolis? agglomeration? megalopolis?]. Available at: <http://demoscope.ru/weekly/2012/0517/demoscope517.pdf> (date of access: 19.02.2017).
 11. *Moiseenko, V.M. & O.S. Chudinovskikh.* (2000). Migratsionnye potoki pozhologo naseleniya v Rossii [Migration flows of the elderly population in Russia]. *Psikhologiya zrelosti i stareniya* [Psychology of Maturity and Old Age], 1, 28–35.
 12. *Vishnevsky, A.G. (Ed.).* (2014). *Naselenie Rossii 2012. Dvadsatyy ezhegodnyy demograficheskiy doklad* [Population of Russia 2012: 20th Annual Demographic Report]. Moscow, Higher School of Economics Publ., 309–317.
 13. *Tarasova, E.V.* (2013). Osobennosti migratsii naseleniya starshe trudosposobnogo vozrasta v Altayskom krae [Peculiarities of migration of population above the working age in Altai Krai]. *Sotsialnaya integratsiya i razvitie etnokultur v Evraziyskom prostranstve* [Social Integration and Development of Ethnic Cultures in the Eurasian Space], 1, 150–153.
 14. *Chikhichin, V.V.* (2014). Uchebnaya migratsiya na Severnom Kavkaze: prichiny, geografiya i vozmozhnye problemy [Educational migration in the North Caucasus: causes, geography and possible problems]. *Nauka. Innovatsii. Tekhnologii* [Science. Innovation. Technologies], 2, 161–178.
 15. *Chudinovskikh, O.S.* (2005). Uchet migratsii v Rossii: prichiny i posledstviya krizisa [Accounting of migration in Russia: reasons and consequences of the crisis]. Available at: <http://demoscope.ru/weekly/2005/0185/analit03.php> (date of access: 23.02.2017).
 16. *Argent, N. & J. Walmsley.* (2008). Rural youth migration trends in Australia: An overview of recent trends and two inland case studies. *Geographical Research*, 46 (2), 139–152.
 17. *Fielding, A.J.* (1989). Inter-regional migration and social change: a study of South East England based upon data from the Longitudinal Study. *Transactions – Institute of British Geographers. New Series*, 14 (1), 24–36.
 18. *Findlay, A.M., A. Stockdale, A. Findlay & D. Short.* (2001). Mobility as a driver of change in rural Britain: An analysis of the links between migration, commuting and travel to shop patterns. *International Journal of Population Geography*, 7 (1), 1–15.
 19. *Geist, C. & P. McManus.* (2008). Geographical mobility over the life course: motivations and implications. *Population, Space and Place*, 14 (4), 283–303.
 20. *Kalogirou, S.* (2005). Examining and presenting trends of internal migration flows within England and Wales. *Population, Space and Place*, 11 (4), 283–297.
 21. *Kley, S.* (2011). Explaining the stages of migration within a life-course framework. *European Sociological Review*, 27 (4), 469–486.
 22. *Lee, E.S.* (1966). theory of migration. *Demography*, 3 (1), 47–57.
 23. *Little, J.S. & A. Rogers.* (2007). What can the age composition of a population tell us about the age composition of its out-migrants? *Population, Space and Place*, 13 (1), 23–39.

-
24. *Litwak, E. & C.F. Longino.* (1987). Migration patterns among the elderly: A developmental perspective. *The Gerontologist*, 27 (3), 266–272.
25. *Morrill, R.* (1995). Aging in place, age specific migration and natural decrease. *The Annals of Regional Science*, 29 (1), 41–66.
26. *Plane, D. & F. Heins.* (2003). Age articulation of U.S. inter-metropolitan migration flows. *Annals of Regional Science*, 37 (1), 107–130.
27. *Plane, D. & J. Jurjevich.* (2009). Ties that no longer bind? The patterns and repercussions of age-articulated migration. *The Professional Geographer*, 61(1), 4–20.
28. *Raymer, J., G. Abel & P. Smith.* (2007). Combining census and registration data to estimate detailed elderly migration flows in England and Wales. *Royal Statistical Society*, 170 (4), 891–908.
29. *Rerat, P., E. Piguët, R. Besson & O. Soderström.* (2008). Age structure of Swiss cities: Residential mobility, life course and attractiveness. *Geographica Helvetica*, 63 (4), 261–271.
30. *Rogers, A. & L. Castro.* (1981). Model migration schedules. Research report RR-81-30. II ASA. Laxenburg, Austria, 84.
31. *Sander, N. & M. Bell.* (2014). Migration and retirement in the life course: An event history approach. *Journal of Population Research*, 31 (10), 1–27.
32. *Stockdale, A.* (2006). The role of a «retirement transition» in the repopulation of rural areas. *Population, Space and Place*, 12 (1), 1–13.
33. *Thomas, D., R. Heberle, E. Hutchinson et al.* (1938). Research memorandum on migration differentials. New York: Social Science Research Council, Bulletin 43, 7.
34. *Whisler, R.L., B.S. Waldorf, G.F. Mulligan & D.A. Plane.* (2008). Quality of life and the migration of the college-educated: A life-course approach. *Growth and Change*, 39 (1), 58–94.

Information about the authors

Karachurina, Liliya Borisovna (Moscow, Russia) – Candidate of Sciences (Geography), Associate Professor at National Research University Higher School of Economics (20, Myasnitckaya st., Moscow, 101000, Russia, e-mail: lkarachurina@hse.ru).

Mkrtchyan, Nikita Vladimirovich (Moscow, Russia) – Candidate of Sciences (Geography), Leading Researcher at the Institute of Demography, National Research University Higher School of Economics (20, Myasnitckaya st., Moscow, 101000, Russia, e-mail: nmkrtchyan@hse.ru).

28.08.2017 .

© 2017