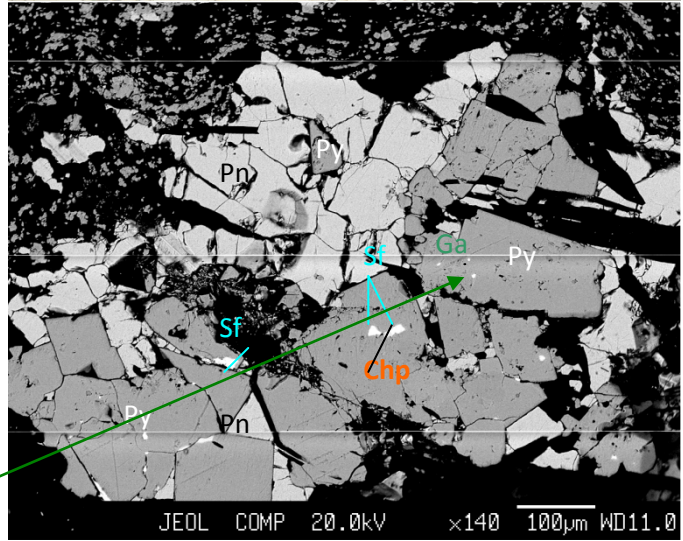
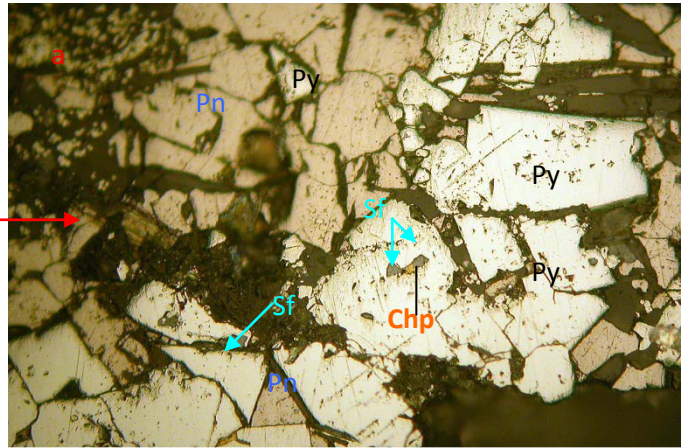
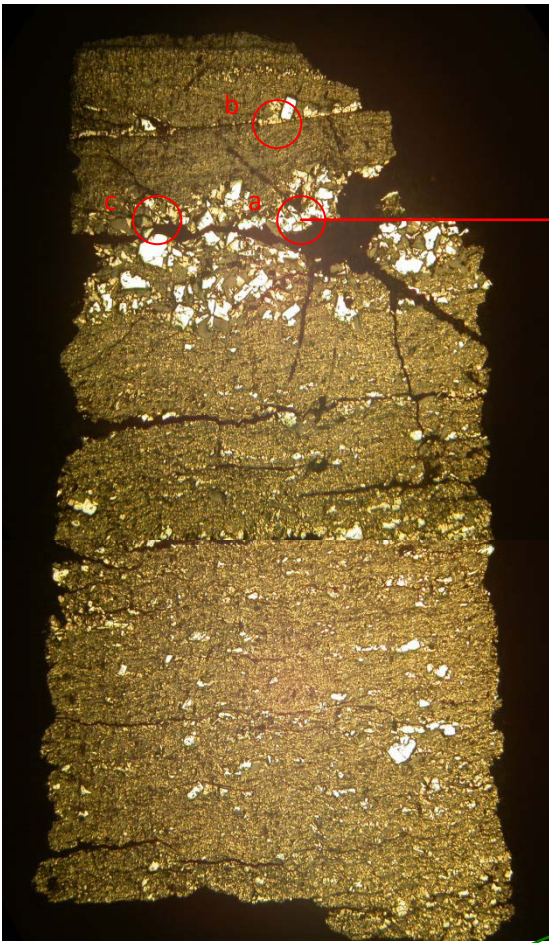


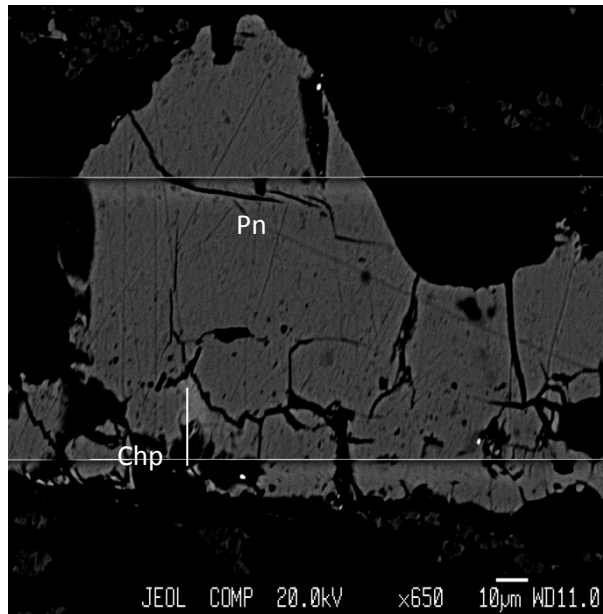
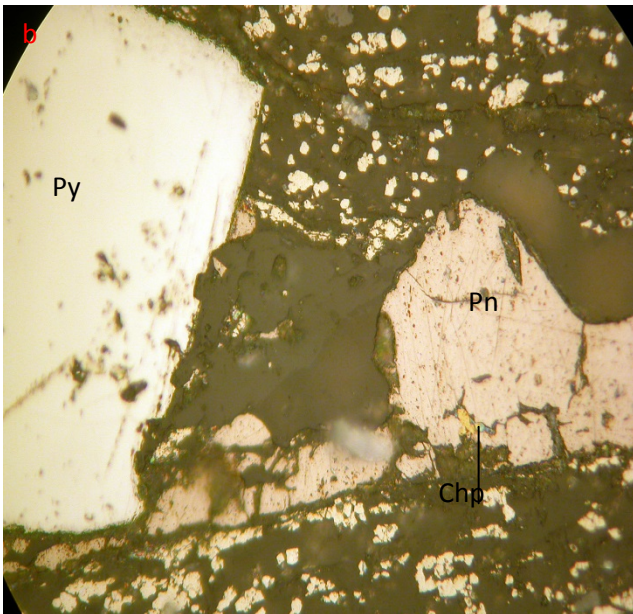
Central Vojma deposit

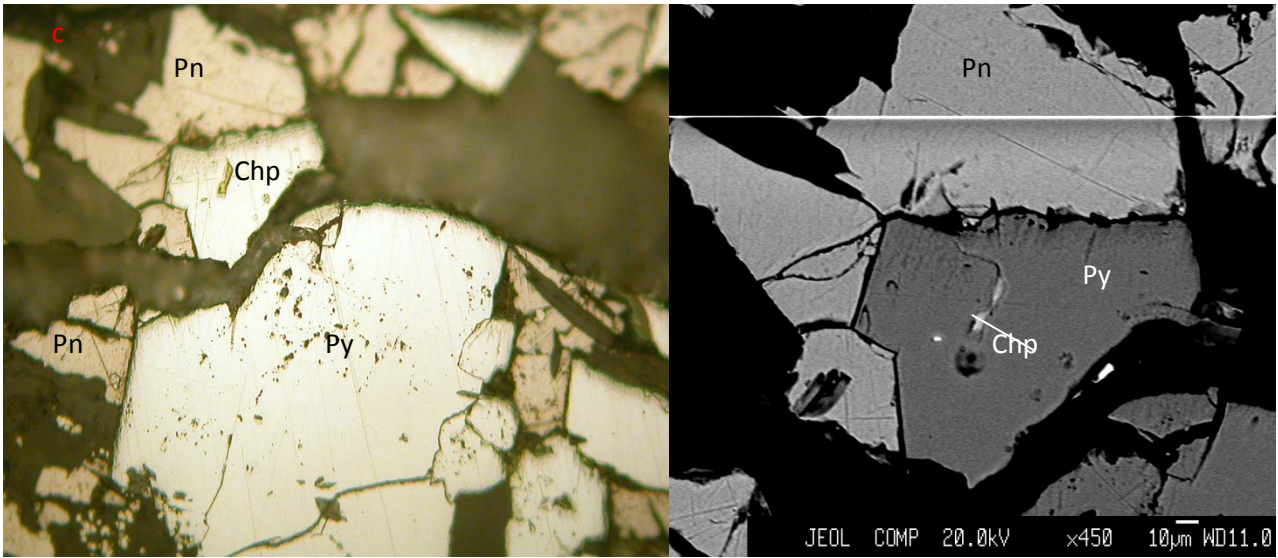
Sample C-38-3

Close-grained disseminated-banded pyritic ore. Pyrite grains are fine and globular, pyrrhotite grains are fine.



Ga – bright white dots

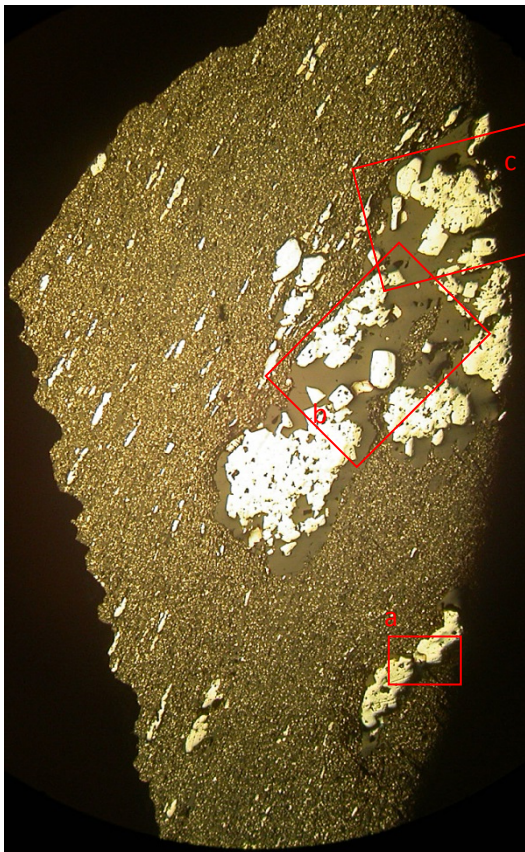




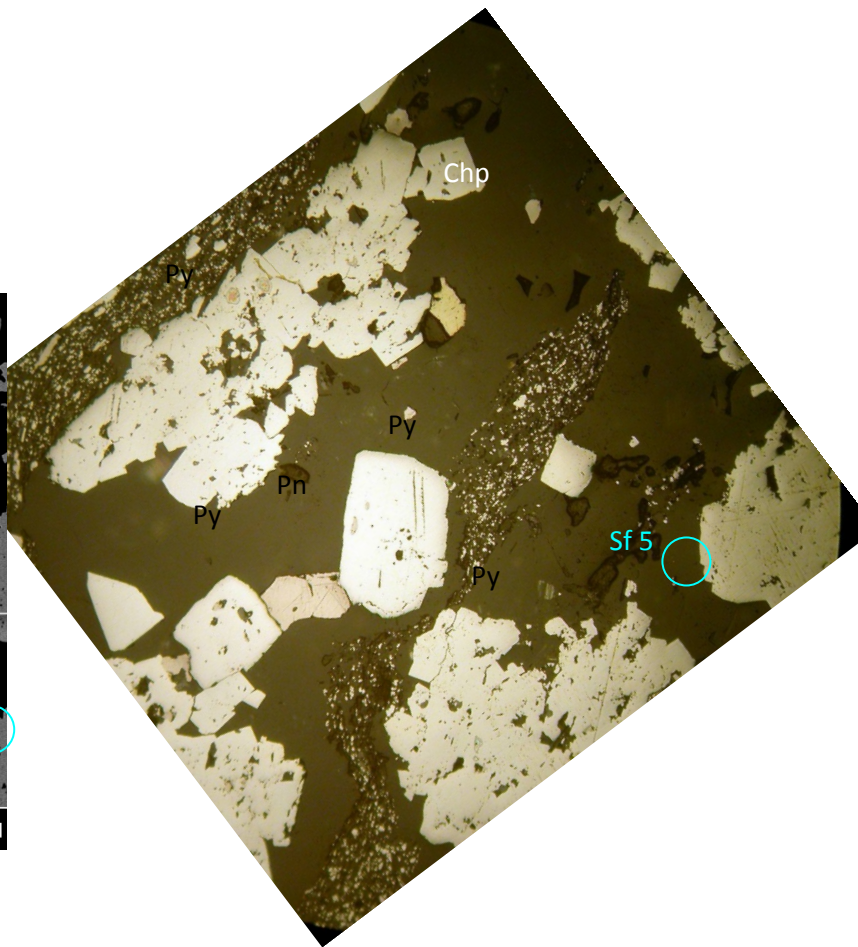
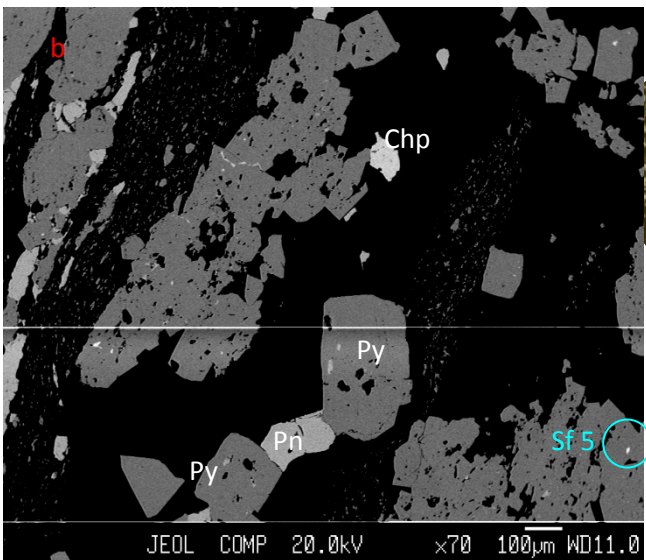
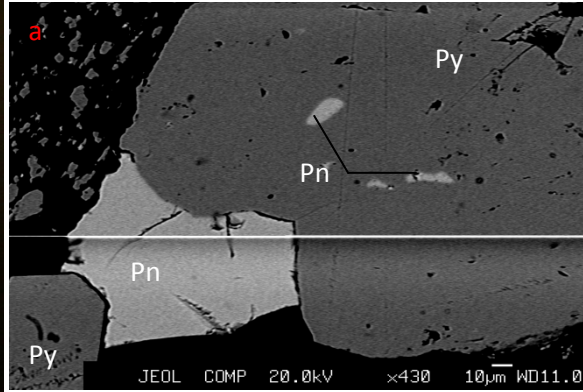
Mineral	S	Fe	Cu	Zn	Se	Pb	Total
Py	54,42	46,22					100,64
Pn	40,22	59,75					99,96
Sf	34,08	6,76		58,77			99,62
Chp	35,2	30,49	33,16				98,86
Ga	13,16	3,63			1,35	75,83	93,97

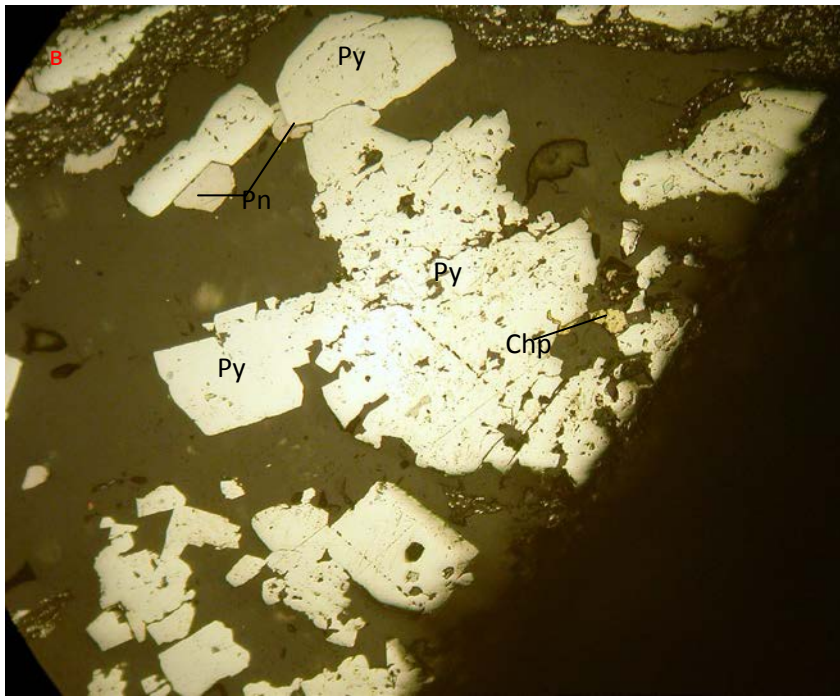
C-39-15

Banded pyritic ore in black slates. Pyrite grains are concretionary and fine. Pyrrhotite grains are small in number.



Py, Pn, Chp

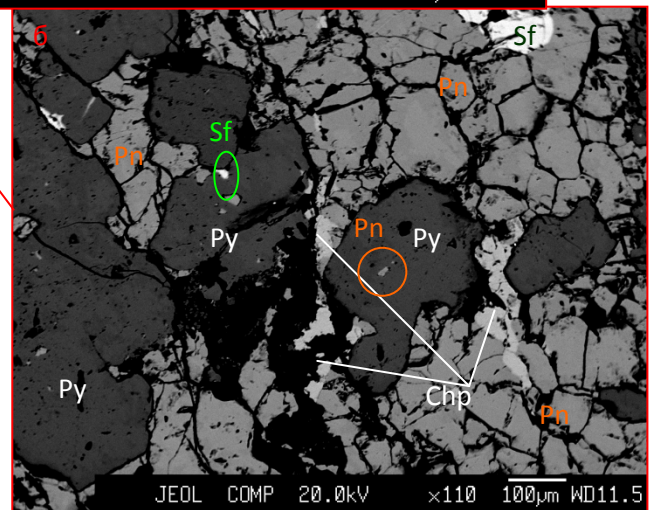
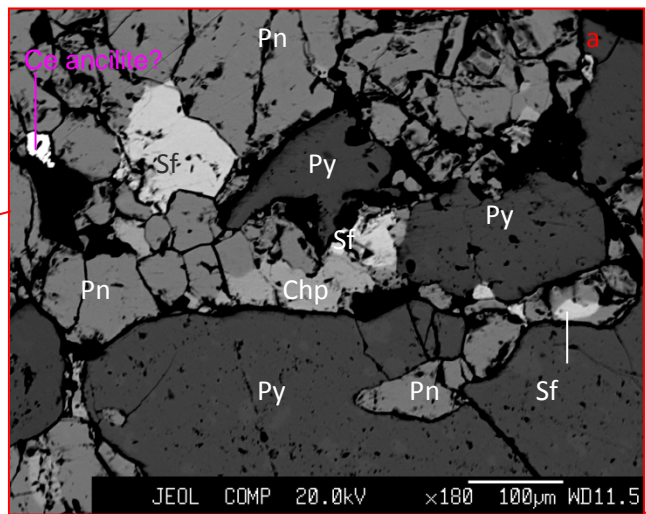
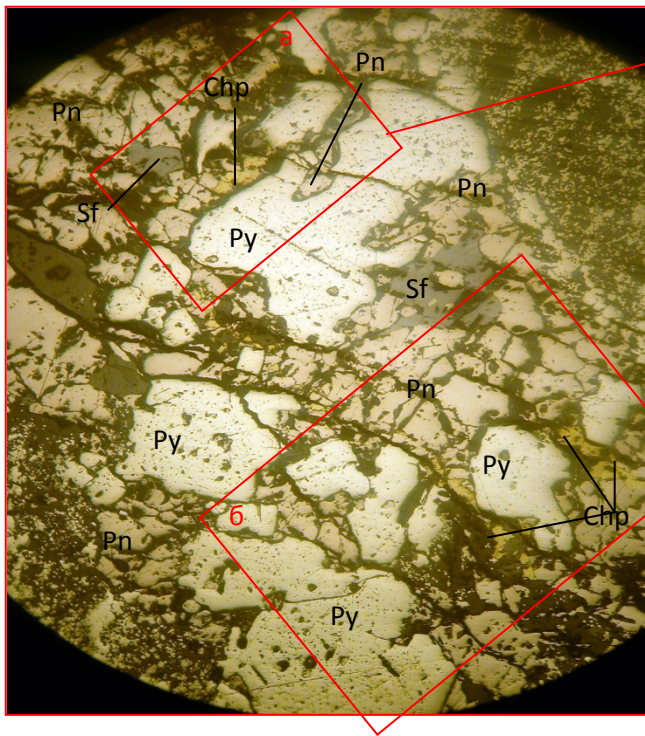
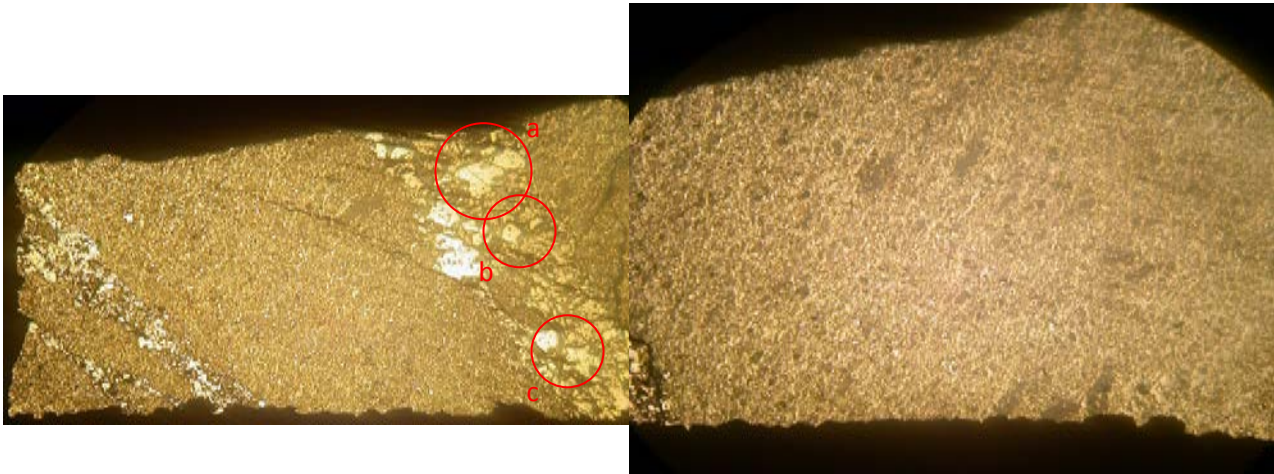




Mineral	S	Mn	Fe	Cu	Zn	Total
Pn	40,79		59,5			100,29
Py	54,7		47,1			101,8
Chp	35,37		29,76	33,05		98,18
Sf	34,98	0,46	11,57		52,27	99,27

C 39-44

Close-grained pyritic ore in black slates. Pyrite is in association with pyrrhotite.



Mineral	S	Mn	Fe	Cu	Zn	Total
Pn	41,53		60,69			102,22
Py	56,37		47,36			103,74
Chp	36,12		31,4	33,78		101,3
						100,97

